





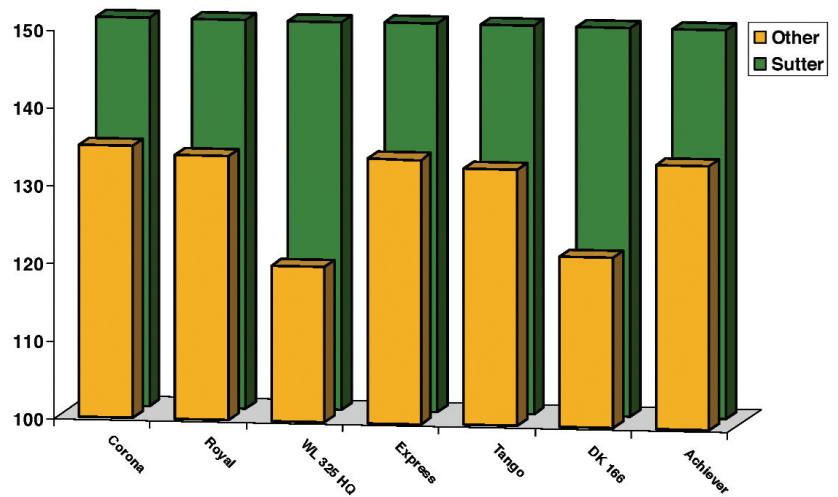




SUTTER Alfalfa

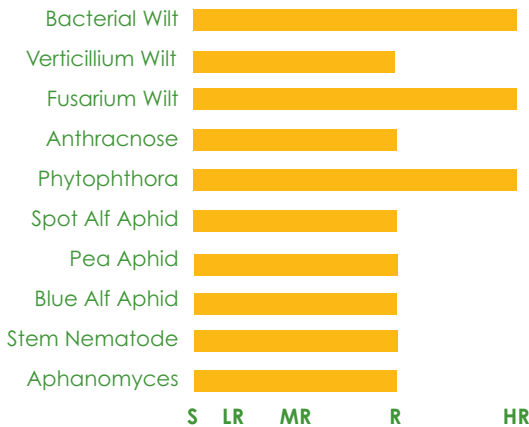
Proven Performance

-  Outstanding proven yield leader
-  Exceptional quality with superior leaf-to-stem ratio
-  Very strong disease package with high resistance to Phytophthora
-  Great stand persistence for long term rotation
-  Very fast recovery after each cutting
-  Fall dormancy of 7

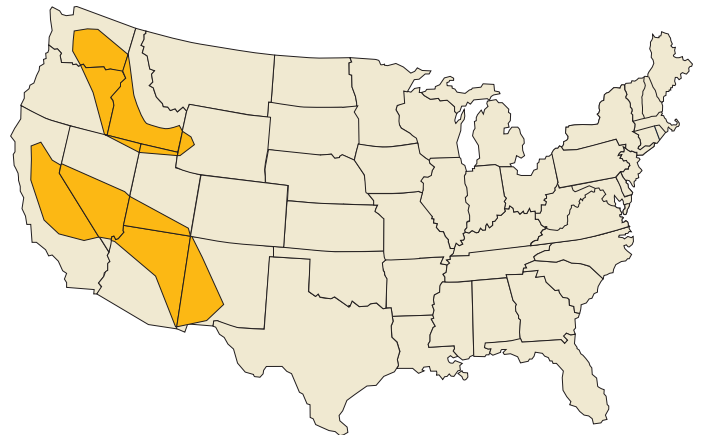


• UC Davis semi-dormant trial summary yield @% Lahontan

Disease & Pest Resistance



Area of Adaptation



Product Description

Sutter alfalfa is a variety bred for those areas of the west where five to six harvests per year is standard practice. Sutter has an extremely good pest and disease package which results in a long term rotation.

Agronomic Characteristics

Recovery Very Fast
 Leaf to Stem Ratio Excellent
 Fall Dormancy 7



Your Alfalfa and Forage Experts